



MONTHLY SUMMARY OF STATISTICS

VICTORIA

EMBARGO: 11:30AM (CANBERRA TIME) TUES 20 JUNE 2000

CONTENTS

| | <i>page</i> |
|-------------------------|-------------|
| Notes | 2 |
| Selected features | 3 |
| | |
| TABLES | |
| List of tables..... | 4 |
| Demography..... | 5 |
| Labour..... | 6 |
| Wages..... | 9 |
| Prices..... | 10 |
| Meat production..... | 11 |
| Building..... | 12 |
| Finance..... | 15 |
| Retail..... | 16 |
| Trade..... | 17 |
| Tourism..... | 18 |

- For further information about these and related statistics, contact the National Information Service on 1300 135 070, or Robert Letheby on Melbourne 03 9615 7643.

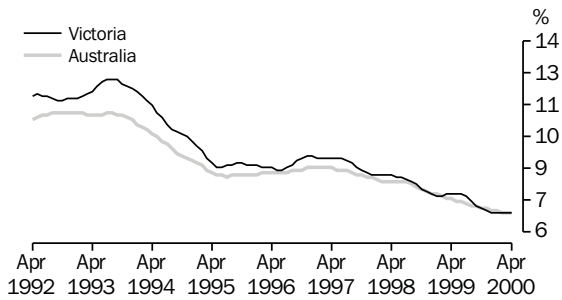
NOTES

| FORTHCOMING ISSUES | <table border="0"> <thead> <tr> <th style="text-align: left;"><i>ISSUE</i></th> <th style="text-align: left;"><i>RELEASE DATE</i></th> </tr> </thead> <tbody> <tr> <td>June 2000</td> <td>18 July 2000</td> </tr> <tr> <td>July 2000</td> <td>22 August 2000</td> </tr> <tr> <td>August 2000</td> <td>19 September 2000</td> </tr> <tr> <td>September 2000</td> <td>17 October 2000</td> </tr> <tr> <td>October 2000</td> <td>21 November 2000</td> </tr> <tr> <td>November 2000</td> <td>19 December 2000</td> </tr> </tbody> </table> | <i>ISSUE</i> | <i>RELEASE DATE</i> | June 2000 | 18 July 2000 | July 2000 | 22 August 2000 | August 2000 | 19 September 2000 | September 2000 | 17 October 2000 | October 2000 | 21 November 2000 | November 2000 | 19 December 2000 | | | | |
|--------------------------|--|--------------|---------------------|-----------|--------------------------|-----------|---|-------------|-------------------|----------------|--|--------------|---|---------------|---|-----|----------------|---|------------------------|
| <i>ISSUE</i> | <i>RELEASE DATE</i> | | | | | | | | | | | | | | | | | | |
| June 2000 | 18 July 2000 | | | | | | | | | | | | | | | | | | |
| July 2000 | 22 August 2000 | | | | | | | | | | | | | | | | | | |
| August 2000 | 19 September 2000 | | | | | | | | | | | | | | | | | | |
| September 2000 | 17 October 2000 | | | | | | | | | | | | | | | | | | |
| October 2000 | 21 November 2000 | | | | | | | | | | | | | | | | | | |
| November 2000 | 19 December 2000 | | | | | | | | | | | | | | | | | | |
| ABOUT THIS PUBLICATION | <p>The aim of this publication is to provide users with a range of the latest statistics available at the end of each month of issue. Consequently, the dates and periods shown are not always the same for each table, but are in each case the latest figures available at that time.</p> | | | | | | | | | | | | | | | | | | |
| SEASONAL ADJUSTMENT | <p>Seasonal adjustment is a means of removing the estimated effects of normal seasonal variations from economic time series so that the effects of other influences are obvious. Seasonal variations are the systematic (though not necessarily regular) intra-year movements of economic time series. These are often the result of non-economic phenomena, such as climatic changes and regular religious festivals, e.g. Christmas and Easter.</p> | | | | | | | | | | | | | | | | | | |
| TREND ESTIMATE | <p>Smoothing seasonally adjusted series produces a measure of trend by removing the impact of the irregular component of the series. The trend estimates are derived by applying a 13-term Henderson weighted moving average to the respective seasonally adjusted series. Readers are reminded that trend estimates are subject to revision as subsequent months' data become available.</p> | | | | | | | | | | | | | | | | | | |
| CHANGES IN THIS ISSUE | <p>Changes to procedures for maintaining the Retail survey frame have been introduced which affects the data in table 18. The introduction of these practices resulted in an increase in the level of Retail turnover estimates published for most industries for April 2000. However data from April 1994 onwards have been revised to progressively phase in this shift of level. As a result of this process current and historic month to month movements are not perceptibly affected. Further details are available in paragraph 22 of the April 2000 publication of <i>Retail Trade, Australia</i> (Cat. no. 8501.0).</p> | | | | | | | | | | | | | | | | | | |
| SYMBOLS AND OTHER USAGES | <table border="0"> <tr> <td>n.a.</td> <td>not available</td> </tr> <tr> <td>n.e.c.</td> <td>not elsewhere classified</td> </tr> <tr> <td>n.p.</td> <td>not available for publication but included in totals where applicable</td> </tr> <tr> <td>n.y.a.</td> <td>not yet available</td> </tr> <tr> <td>p</td> <td>preliminary—figure or series subject to revision</td> </tr> <tr> <td>r</td> <td>figure or series revised since previous issue</td> </tr> <tr> <td>*</td> <td>estimate has a relative standard error greater than 25% and is therefore subject to sampling variability too high for most practical uses</td> </tr> <tr> <td>. .</td> <td>not applicable</td> </tr> <tr> <td>—</td> <td>nil or rounded to zero</td> </tr> </table> | n.a. | not available | n.e.c. | not elsewhere classified | n.p. | not available for publication but included in totals where applicable | n.y.a. | not yet available | p | preliminary—figure or series subject to revision | r | figure or series revised since previous issue | * | estimate has a relative standard error greater than 25% and is therefore subject to sampling variability too high for most practical uses | . . | not applicable | — | nil or rounded to zero |
| n.a. | not available | | | | | | | | | | | | | | | | | | |
| n.e.c. | not elsewhere classified | | | | | | | | | | | | | | | | | | |
| n.p. | not available for publication but included in totals where applicable | | | | | | | | | | | | | | | | | | |
| n.y.a. | not yet available | | | | | | | | | | | | | | | | | | |
| p | preliminary—figure or series subject to revision | | | | | | | | | | | | | | | | | | |
| r | figure or series revised since previous issue | | | | | | | | | | | | | | | | | | |
| * | estimate has a relative standard error greater than 25% and is therefore subject to sampling variability too high for most practical uses | | | | | | | | | | | | | | | | | | |
| . . | not applicable | | | | | | | | | | | | | | | | | | |
| — | nil or rounded to zero | | | | | | | | | | | | | | | | | | |

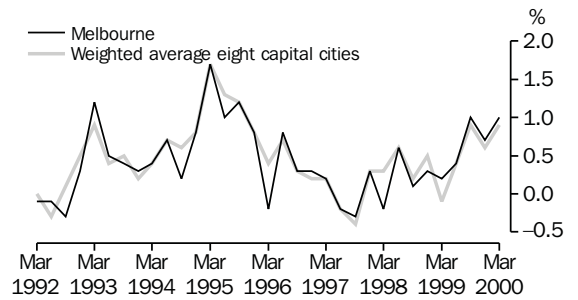
Zia ABBASI,
Regional Director, Victoria

SELECTED FEATURES

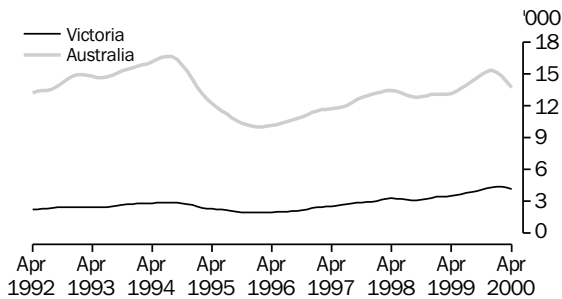
UNEMPLOYMENT RATE, Trend—Monthly



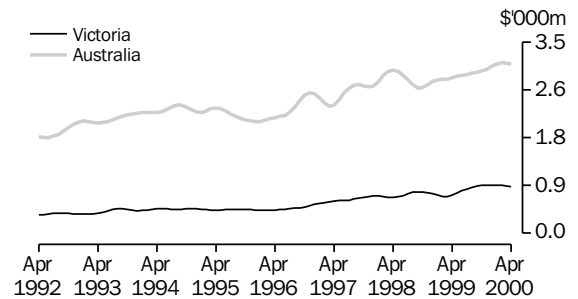
CONSUMER PRICE INDEX, Change from previous quarter



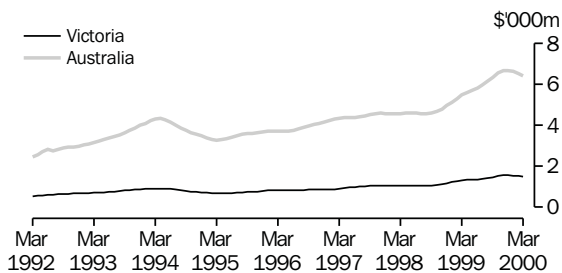
NEW DWELLING UNITS APPROVED, Trend—Monthly



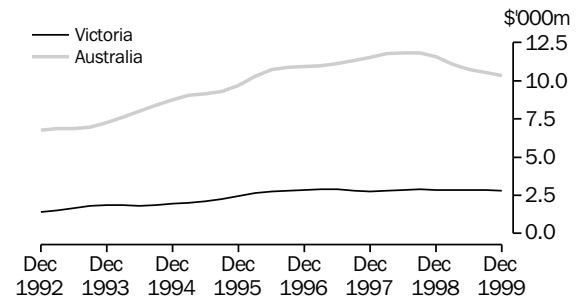
VALUE OF ALL BUILDINGS APPROVED, Trend—Monthly



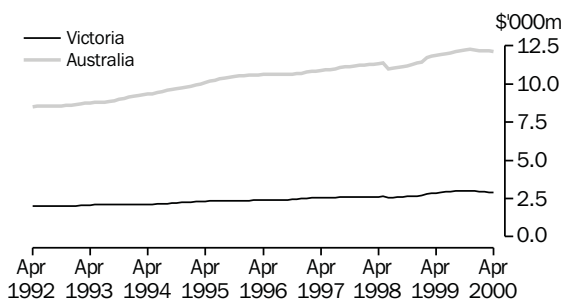
TOTAL VALUE OF SECURED HOUSING FINANCE COMMITMENTS TO INDIVIDUALS, Trend—Monthly



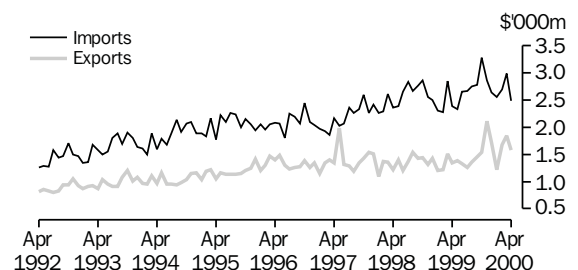
PRIVATE NEW CAPITAL EXPENDITURE, Trend—Quarterly



RETAIL TURNOVER, Trend—Monthly



MERCHANDISE IMPORTS AND EXPORTS, Original—Monthly



LIST OF TABLES

| | | | Page |
|-----------------|-----------|--|------|
| DEMOGRAPHY | 1 | Estimated resident population | 5 |
| | 2 | Births, deaths, marriages and divorces | 5 |
| LABOUR | 3 | Labour force status of the civilian population aged 15 years and over | 6 |
| | 4 | Employed persons, by industry | 7 |
| | 5 | Job vacancies | 8 |
| | 6 | Industrial disputes causing stoppage of work | 8 |
| | 7 | Average weekly earnings of employees | 9 |
| | 8 | Consumer price index—Melbourne | 10 |
| | 9 | Price index of materials used in building—Melbourne | 10 |
| MEAT PRODUCTION | 10 | Livestock slaughterings | 11 |
| | 11 | Meat production | 11 |
| BUILDING | 12 | Building approvals—Melbourne and Victoria | 12 |
| | 13 | New houses and other residential buildings, number of dwelling units | 13 |
| | 14 | Value of building | 14 |
| FINANCE | 15 | Private new capital expenditure, by selected industries and type of asset | 15 |
| | 16 | Commercial finance commitments | 15 |
| | 17 | Secured housing finance commitments, dwelling units | 16 |
| RETAIL | 18 | Retail turnover, by industry (excluding motor vehicles, parts, petrol, etc.) | 16 |
| TRADE | 19 | Exports and imports, by sections of the Australian export and import classifications | 17 |
| | 20 | Overseas trade, major trading partners | 17 |
| | 21 | Value of overseas trade—Victoria and Australia | 18 |
| TOURISM | 22 | Tourist accommodation | 18 |

1

ESTIMATED RESIDENT POPULATION

| | At end of period | | | Increase during period | | Melbourne Statistical Division at 30 June(a) |
|----------------|------------------|---------|---------|------------------------|-------|--|
| | Males | Females | Persons | Natural | Total | |
| | '000 | '000 | '000 | '000 | '000 | |
| 1996-97 | 2 275.2 | 2 330.0 | 4 605.2 | 28.7 | 45.1 | 3 321.8 |
| 1997-98 | 2 301.0 | 2 353.9 | 4 654.9 | 27.7 | 49.7 | 3 367.0 |
| 1998-99 | 2 330.1 | 2 382.1 | 4 712.2 | 26.2 | 57.2 | 3 417.2 |
| 1997 | | | | | | |
| September qtr | 2 281.9 | 2 336.0 | 4 617.8 | 6.1 | 12.6 | .. |
| December qtr | 2 286.3 | 2 341.1 | 4 627.4 | 7.4 | 9.6 | .. |
| 1998 | | | | | | |
| March qtr | 2 295.3 | 2 348.9 | 4 644.3 | 7.4 | 16.9 | .. |
| June qtr | 2 301.0 | 2 353.9 | 4 654.9 | 6.8 | 10.7 | .. |
| September qtr | 2 308.2 | 2 360.8 | 4 669.0 | 6.4 | 14.1 | .. |
| December qtr | 2 315.3 | 2 368.6 | 4 683.8 | 6.6 | 14.8 | .. |
| 1999 | | | | | | |
| March qtr | 2 324.6 | 2 376.8 | 4 701.4 | 6.9 | 17.6 | .. |
| June qtr | 2 330.1 | 2 382.1 | 4 712.2 | 6.4 | 10.8 | .. |
| September qtr | 2 337.8 | 2 388.9 | 4 726.6 | 6.2 | 14.4 | .. |
| December qtr | 2 345.1 | 2 396.3 | 4 741.5 | 6.3 | 14.9 | .. |

(a) Based on the 1998 Statistical Division boundaries.

Source: Australian Demographic Statistics (Cat. no. 3101.0) (quarterly).

2

BIRTHS, DEATHS, MARRIAGES AND DIVORCES

| | Registrations | | | | Annual rate per 1,000 of mean estimated resident population | | | | |
|------------------|---------------|--|-----------|----------|---|--------|-----------|----------|--|
| | Births | Deaths (including infant deaths) | Marriages | Divorces | Births | Deaths | Marriages | Divorces | Infant deaths per 1,000 live births |
| | no. | no. | no. | no. | rate | rate | rate | rate | rate |
| 1996-97 | 61 232 | 32 570 | 25 664 | 13 046 | 13.36 | 7.11 | 5.60 | 2.85 | 4.46 |
| 1997-98 | 60 143 | 32 423 | 25 955 | 11 916 | 13.00 | 7.01 | 5.61 | 2.58 | 4.86 |
| 1998-99 p | 59 016 | 32 769 | 26 249 | 12 614 | 12.60 | 7.00 | 5.60 | 2.69 | 5.74 |
| 1997 | | | | | | | | | |
| September qtr | 15 437 | 9 344 | 3 822 | 3 164 | .. | .. | .. | .. | .. |
| December qtr | 15 259 | 7 813 | 7 533 | 3 181 | .. | .. | .. | .. | .. |
| Year—1997 | 60 610 | 32 760 | 25 456 | 12 463 | 13.16 | 7.11 | 5.53 | 2.71 | 4.82 |
| 1998 | | | | | | | | | |
| March qtr | 14 577 | 7 169 | 8 530 | 2 663 | .. | .. | .. | .. | .. |
| June qtr | 14 870 | 8 097 | 6 070 | 2 908 | .. | .. | .. | .. | .. |
| September qtr p | 15 550 | 9 131 | 3 912 | 3 188 | .. | .. | .. | .. | .. |
| December qtr p | 15 193 | 8 614 | 7 860 | 3 548 | .. | .. | .. | .. | .. |
| Year—1998 p | 60 190 | 33 011 | 26 372 | 12 307 | 12.93 | 7.09 | 5.67 | 2.64 | 5.15 |
| 1999 | | | | | | | | | |
| March qtr p | 13 492 | 6 618 | 8 659 | 2 774 | .. | .. | .. | .. | .. |
| June qtr p | 14 781 | 8 406 | 5 818 | 3 104 | .. | .. | .. | .. | .. |
| September qtr | 14 965 | 8 747 | 4 210 | 3 461 | .. | .. | .. | .. | .. |
| December qtr p | 14 554 | 8 220 | 8 462 | 3 438 | .. | .. | .. | .. | .. |
| Year—1999 p | 57 792 | 31 991 | 27 149 | 12 777 | 12.26 | 6.79 | 5.76 | 2.71 | 5.69 |

Source: Demography, Victoria (Cat. no. 3311.2) (annual); Australian Demographic Statistics (Cat. no. 3101.0) (quarterly).

LABOUR FORCE STATUS OF THE CIVILIAN POPULATION AGED 15 YEARS AND OVER

| | <i>Employed</i> | | <i>Unemployed looking for work</i> | | | <i>Labour force</i> | <i>Not in labour force</i> | <i>Civilian population 15 years and over</i> | <i>Unemployment rate</i> | <i>Participation rate</i> |
|-------------|------------------|--------------|------------------------------------|------------------|--------------|---------------------|----------------------------|--|--------------------------|---------------------------|
| | <i>Full-time</i> | <i>Total</i> | <i>Full-time</i> | <i>Part-time</i> | <i>Total</i> | | | | | |
| | '000 | '000 | '000 | '000 | '000 | | | | | |
| MALES | | | | | | | | | | |
| 1999 | | | | | | | | | | |
| February | 1 085.5 | 1 231.2 | 94.5 | 16.2 | 110.7 | 1 341.9 | 486.5 | 1 828.4 | 8.2 | 73.4 |
| March | 1 083.1 | 1 238.3 | 81.9 | 17.1 | 99.0 | 1 337.4 | 493.2 | 1 830.5 | 7.4 | 73.1 |
| April | 1 065.9 | 1 229.7 | 91.6 | 19.7 | 111.3 | 1 341.0 | 491.9 | 1 832.9 | 8.3 | 73.2 |
| May | 1 065.2 | 1 220.4 | 88.8 | 21.9 | 110.7 | 1 331.1 | 504.2 | 1 835.3 | 8.3 | 72.5 |
| June | 1 072.6 | 1 248.4 | 87.4 | 11.5 | 98.8 | 1 347.2 | 490.4 | 1 837.7 | 7.3 | 73.3 |
| July | 1 082.6 | 1 243.2 | 80.7 | 14.8 | 95.5 | 1 338.7 | 501.3 | 1 840.0 | 7.1 | 72.8 |
| August | 1 072.4 | 1 225.7 | 80.3 | 18.1 | 98.4 | 1 324.2 | 518.2 | 1 842.3 | 7.4 | 71.9 |
| September | 1 079.6 | 1 243.7 | 82.8 | 17.7 | 100.5 | 1 344.2 | 500.5 | 1 844.7 | 7.5 | 72.9 |
| October | 1 077.2 | 1 242.2 | 71.5 | 15.9 | 87.4 | 1 329.6 | 518.0 | 1 847.6 | 6.6 | 72.0 |
| November | 1 068.9 | 1 228.3 | 74.6 | 14.4 | 89.0 | 1 317.4 | 533.2 | 1 850.5 | 6.8 | 71.2 |
| December | 1 097.1 | 1 262.9 | 74.8 | 20.1 | 95.0 | 1 357.9 | 495.6 | 1 853.5 | 7.0 | 73.3 |
| 2000 | | | | | | | | | | |
| January | 1 077.8 | 1 232.6 | 78.0 | 13.5 | 91.4 | 1 324.0 | 531.6 | 1 855.6 | 6.9 | 71.4 |
| February | 1 102.6 | 1 254.6 | 71.9 | 18.8 | 90.7 | 1 345.3 | 512.6 | 1 857.8 | 6.7 | 72.4 |
| March | 1 084.4 | 1 249.8 | 71.7 | 21.1 | 92.8 | 1 342.5 | 517.5 | 1 860.0 | 6.9 | 72.2 |
| April | 1 084.6 | 1 255.0 | 69.1 | 21.0 | 90.1 | 1 345.1 | 517.1 | 1 862.2 | 6.7 | 72.2 |
| FEMALES | | | | | | | | | | |
| 1999 | | | | | | | | | | |
| February | 531.6 | 929.5 | 54.6 | 32.1 | 86.7 | 1 016.2 | 893.0 | 1 909.2 | 8.5 | 53.2 |
| March | 525.8 | 936.6 | 48.1 | 32.2 | 80.3 | 1 016.9 | 894.3 | 1 911.2 | 7.9 | 53.2 |
| April | 520.0 | 936.8 | 45.6 | 28.2 | 73.8 | 1 010.6 | 902.9 | 1 913.5 | 7.3 | 52.8 |
| May | 520.3 | 940.0 | 43.5 | 28.0 | 71.5 | 1 011.5 | 904.4 | 1 915.9 | 7.1 | 52.8 |
| June | 523.6 | 951.8 | 44.5 | 25.1 | 69.6 | 1 021.4 | 896.8 | 1 918.2 | 6.8 | 53.2 |
| July | 542.5 | 963.3 | 38.6 | 35.3 | 73.9 | 1 037.2 | 883.4 | 1 920.6 | 7.1 | 54.0 |
| August | 527.8 | 953.3 | 38.4 | 29.0 | 67.4 | 1 020.6 | 902.3 | 1 922.9 | 6.6 | 53.1 |
| September | 539.5 | 981.9 | 45.5 | 33.9 | 79.3 | 1 061.2 | 864.1 | 1 925.3 | 7.5 | 55.1 |
| October | 536.0 | 975.8 | 42.3 | 25.8 | 68.1 | 1 043.9 | 884.1 | 1 928.0 | 6.5 | 54.1 |
| November | 533.8 | 975.3 | 38.5 | 27.7 | 66.3 | 1 041.6 | 889.1 | 1 930.7 | 6.4 | 54.0 |
| December | 568.0 | 997.4 | 43.5 | 26.8 | 70.4 | 1 067.8 | 865.6 | 1 933.4 | 6.6 | 55.2 |
| 2000 | | | | | | | | | | |
| January | 547.3 | 943.2 | 43.4 | 33.8 | 77.3 | 1 020.5 | 915.0 | 1 935.4 | 7.6 | 52.7 |
| February | 546.2 | 965.8 | 49.9 | 34.2 | 84.1 | 1 049.9 | 887.6 | 1 937.5 | 8.0 | 54.2 |
| March | 546.9 | 981.2 | 47.6 | 33.3 | 80.9 | 1 062.1 | 877.4 | 1 939.5 | 7.6 | 54.8 |
| April | 541.5 | 978.8 | 44.0 | 30.3 | 74.3 | 1 053.1 | 888.3 | 1 941.5 | 7.1 | 54.2 |
| PERSONS | | | | | | | | | | |
| 1999 | | | | | | | | | | |
| February | 1 617.1 | 2 160.8 | 149.1 | 48.3 | 197.4 | 2 358.1 | 1 379.5 | 3 737.6 | 8.4 | 63.1 |
| March | 1 609.0 | 2 175.0 | 130.0 | 49.3 | 179.3 | 2 354.3 | 1 387.5 | 3 741.8 | 7.6 | 62.9 |
| April | 1 585.9 | 2 166.6 | 137.3 | 47.8 | 185.1 | 2 351.6 | 1 394.8 | 3 746.5 | 7.9 | 62.8 |
| May | 1 582.8 | 2 160.3 | 132.3 | 49.9 | 182.2 | 2 342.6 | 1 408.6 | 3 751.2 | 7.8 | 62.4 |
| June | 1 596.2 | 2 200.2 | 131.9 | 36.6 | 168.4 | 2 368.6 | 1 387.3 | 3 755.9 | 7.1 | 63.1 |
| July | 1 625.1 | 2 206.5 | 119.4 | 50.1 | 169.4 | 2 375.9 | 1 384.6 | 3 760.6 | 7.1 | 63.2 |
| August | 1 600.2 | 2 179.0 | 118.7 | 47.1 | 165.8 | 2 344.8 | 1 420.5 | 3 765.3 | 7.1 | 62.3 |
| September | 1 619.1 | 2 225.5 | 128.3 | 51.6 | 179.9 | 2 405.4 | 1 364.5 | 3 770.0 | 7.5 | 63.8 |
| October | 1 613.2 | 2 218.0 | 113.7 | 41.8 | 155.5 | 2 373.5 | 1 402.1 | 3 775.6 | 6.6 | 62.9 |
| November | 1 602.7 | 2 203.7 | 113.2 | 42.1 | 155.3 | 2 359.0 | 1 422.2 | 3 781.2 | 6.6 | 62.4 |
| December | 1 665.1 | 2 260.3 | 118.3 | 47.0 | 165.3 | 2 425.7 | 1 361.2 | 3 786.8 | 6.8 | 64.1 |
| 2000 | | | | | | | | | | |
| January | 1 625.1 | 2 175.8 | 121.4 | 47.3 | 168.7 | 2 344.5 | 1 446.6 | 3 791.1 | 7.2 | 61.8 |
| February | 1 648.7 | 2 220.4 | 121.8 | 53.0 | 174.8 | 2 395.2 | 1 400.1 | 3 795.3 | 7.3 | 63.1 |
| March | 1 631.3 | 2 230.9 | 119.3 | 54.4 | 173.7 | 2 404.6 | 1 394.9 | 3 799.6 | 7.2 | 63.3 |
| April | 1 626.1 | 2 233.8 | 113.1 | 51.3 | 164.4 | 2 398.2 | 1 405.4 | 3 803.6 | 6.9 | 63.1 |

Source: Labour Force, Victoria (Cat. no. 6202.2) (quarterly).

4

EMPLOYED PERSONS, BY INDUSTRY

| Industry division | Nov 1998 | Feb 1999 | May 1999 | Aug 1999 | Nov 1999 | Feb 2000 |
|---------------------------------------|----------------|----------------|----------------|----------------|----------------|----------------|
| | '000 | '000 | '000 | '000 | '000 | '000 |
| MALES | | | | | | |
| Agriculture, forestry and fishing | 51.8 | 57.9 | 58.6 | 56.3 | 56.1 | 56.6 |
| Mining | 5.3 | *3.8 | *3.1 | *2.9 | *3.6 | 5.1 |
| Manufacturing | 244.3 | 259.0 | 241.9 | 236.6 | 244.6 | 255.5 |
| Electricity, gas and water supply | 12.0 | 13.4 | 14.4 | 13.9 | 10.6 | 11.1 |
| Construction | 132.1 | 125.7 | 130.1 | 133.8 | 137.0 | 136.3 |
| Wholesale trade | 85.8 | 86.5 | 81.6 | 88.6 | 90.4 | 77.6 |
| Retail trade | 165.1 | 170.1 | 166.0 | 161.7 | 163.9 | 166.0 |
| Accommodation, cafes and restaurants | 39.9 | 42.4 | 41.7 | 40.0 | 41.2 | 46.2 |
| Transport and storage | 75.6 | 78.5 | 72.0 | 75.5 | 70.8 | 71.8 |
| Communication services | 26.4 | 28.5 | 27.8 | 27.9 | 29.6 | 35.7 |
| Finance and insurance | 50.4 | 45.4 | 43.4 | 36.8 | 38.9 | 42.7 |
| Property and business services | 148.4 | 138.3 | 154.3 | 162.2 | 148.7 | 144.5 |
| Government administration and defence | 31.4 | 28.6 | 28.8 | 27.7 | 35.2 | 34.3 |
| Education | 38.4 | 40.4 | 45.4 | 46.4 | 50.2 | 48.0 |
| Health and community services | 45.0 | 46.6 | 42.3 | 39.5 | 36.4 | 41.5 |
| Cultural and recreational services | 26.5 | 25.1 | 27.3 | 32.3 | 30.4 | 31.7 |
| Personal and other services | 40.3 | 41.2 | 41.5 | 43.4 | 40.8 | 50.0 |
| Total | 1 218.9 | 1 231.2 | 1 220.4 | 1 225.7 | 1 228.3 | 1 254.6 |
| FEMALES | | | | | | |
| Agriculture, forestry and fishing | 25.3 | 28.8 | 26.8 | 26.4 | 29.1 | 25.8 |
| Mining | *0.2 | *0.0 | *0.3 | *0.6 | *0.8 | *1.4 |
| Manufacturing | 91.4 | 98.3 | 98.1 | 94.5 | 98.9 | 101.6 |
| Electricity, gas and water supply | *2.5 | *2.7 | *3.9 | *3.0 | *2.4 | *2.4 |
| Construction | 18.2 | 16.5 | 17.2 | 17.3 | 18.5 | 21.0 |
| Wholesale trade | 40.6 | 40.2 | 42.8 | 46.1 | 50.0 | 34.5 |
| Retail trade | 161.5 | 167.6 | 168.5 | 174.9 | 172.2 | 173.7 |
| Accommodation, cafes and restaurants | 49.9 | 43.8 | 44.6 | 47.0 | 48.9 | 48.3 |
| Transport and storage | 19.7 | 22.1 | 22.2 | 20.8 | 22.7 | 20.9 |
| Communication services | 13.2 | 10.9 | 14.0 | 14.1 | 17.3 | 19.5 |
| Finance and insurance | 51.2 | 45.1 | 37.3 | 39.7 | 45.7 | 49.4 |
| Property and business services | 112.1 | 108.0 | 108.9 | 123.6 | 114.5 | 116.8 |
| Government administration and defence | 40.5 | 38.2 | 38.7 | 38.6 | 40.7 | 34.2 |
| Education | 93.3 | 84.0 | 101.1 | 105.1 | 97.1 | 93.6 |
| Health and community services | 155.4 | 155.4 | 144.3 | 137.6 | 149.6 | 156.8 |
| Cultural and recreational services | 28.2 | 26.2 | 32.6 | 26.2 | 26.4 | 24.9 |
| Personal and other services | 37.8 | 41.5 | 38.7 | 37.6 | 40.4 | 41.0 |
| Total | 941.0 | 929.5 | 940.0 | 953.3 | 975.3 | 965.8 |
| PERSONS | | | | | | |
| Agriculture, forestry and fishing | 77.1 | 86.6 | 85.3 | 82.7 | 85.2 | 82.4 |
| Mining | 5.6 | *3.8 | *3.4 | *3.5 | *4.4 | 6.5 |
| Manufacturing | 335.8 | 357.4 | 340.0 | 331.2 | 343.5 | 357.1 |
| Electricity, gas and water supply | 14.5 | 16.2 | 18.3 | 16.9 | 13.0 | 13.5 |
| Construction | 150.3 | 142.2 | 147.3 | 151.1 | 155.6 | 157.3 |
| Wholesale trade | 126.4 | 126.7 | 124.4 | 134.7 | 140.4 | 112.1 |
| Retail trade | 326.6 | 337.6 | 334.5 | 336.7 | 336.0 | 339.7 |
| Accommodation, cafes and restaurants | 89.8 | 86.3 | 86.3 | 87.1 | 90.0 | 94.5 |
| Transport and storage | 95.3 | 100.6 | 94.2 | 96.4 | 93.5 | 92.7 |
| Communication services | 39.6 | 39.4 | 41.9 | 42.0 | 46.9 | 55.1 |
| Finance and insurance | 101.6 | 90.5 | 80.7 | 76.5 | 84.7 | 92.1 |
| Property and business services | 260.5 | 246.3 | 263.3 | 285.8 | 263.2 | 261.3 |
| Government administration and defence | 72.0 | 66.8 | 67.5 | 66.3 | 75.8 | 68.5 |
| Education | 131.7 | 124.4 | 146.5 | 151.5 | 147.3 | 141.6 |
| Health and community services | 200.4 | 202.0 | 186.6 | 177.1 | 186.0 | 198.3 |
| Cultural and recreational services | 54.6 | 51.4 | 60.0 | 58.5 | 56.8 | 56.6 |
| Personal and other services | 78.0 | 82.8 | 80.2 | 80.9 | 81.2 | 91.0 |
| Total | 2 159.8 | 2 160.8 | 2 160.3 | 2 179.0 | 2 203.7 | 2 220.4 |

Source: Labour Force, Victoria (Cat. no. 6202.2) (quarterly).

5

JOB VACANCIES

| | Vacancies all persons '000 | Sector | | Job vacancy rate % |
|-------------|-------------------------------|--------|---------|-----------------------|
| | | Public | Private | |
| | | '000 | '000 | |
| 1998 | | | | |
| November | 34.4 | 1.9 | 32.5 | 1.58 |
| 1999 | | | | |
| February | 15.6 | *2.4 | 13.3 | 0.73 |
| May | 22.1 | 2.5 | 19.6 | 1.05 |
| August | 29.3 | 3.0 | 26.4 | 1.39 |
| November | 31.0 | 3.8 | 27.1 | 1.49 |
| 2000 | | | | |
| February | 27.0 | 4.4 | 22.5 | 1.33 |

Source: Job Vacancies and Overtime, Australia (Cat. no. 6354.0) (quarterly).

6

INDUSTRIAL DISPUTES CAUSING STOPPAGE OF WORK

| | Disputes | | Employees involved | | Working days lost | | | | |
|-------------|---------------------|-------|---------------------|-------|-------------------|--------------|---------------------------------------|------------------|-------|
| | Beginning in period | Total | Beginning in period | Total | Manufacturing | Construction | Education, health, community services | Other industries | Total |
| | no. | no. | '000 | '000 | '000 | '000 | '000 | '000 | '000 |
| 1998 | | | | | | | | | |
| December | 19 | 21 | 3.1 | 4.6 | 2.8 | 1.4 | — | 1.3 | 5.5 |
| 1999 | | | | | | | | | |
| January | 5 | 8 | 1.3 | 1.7 | 2.6 | 0.5 | — | 1.2 | 4.3 |
| February | 17 | 20 | 2.5 | 3.7 | 1.4 | 1.5 | — | 1.7 | 4.7 |
| March | 29 | 32 | 3.6 | 4.2 | 7.3 | 1.0 | — | 1.3 | 9.6 |
| April | 15 | 21 | 13.9 | 14.8 | 7.1 | 13.0 | — | 1.8 | 21.9 |
| May | 23 | 25 | 3.6 | 3.9 | 7.5 | 0.1 | 0.1 | 1.2 | 8.8 |
| June | 23 | 25 | 10.9 | 11.3 | 13.1 | 1.2 | 0.1 | 1.2 | 15.6 |
| July | 16 | 23 | 10.3 | 11.0 | 11.5 | 6.6 | 1.1 | 0.5 | 19.6 |
| August | 29 | 34 | 75.9 | 76.5 | 42.7 | 8.5 | 10.6 | 6.1 | 67.9 |
| September | 13 | 14 | 14.0 | 14.1 | 19.2 | 4.6 | — | 0.2 | 24.0 |
| October | 21 | 23 | 8.2 | 8.4 | 1.6 | 5.1 | 0.7 | 0.6 | 8.0 |
| November | 17 | 21 | 17.8 | 17.9 | 5.2 | 19.6 | — | 0.6 | 25.4 |
| December | 29 | 34 | 5.6 | 6.5 | 6.2 | 1.7 | — | 0.5 | 8.4 |
| 2000 | | | | | | | | | |
| January | 19 | 24 | 2.7 | 2.9 | 3.9 | 2.4 | — | 0.8 | 7.1 |
| February | 17 | 23 | 7.8 | 8.5 | 6.2 | 12.8 | — | 1.6 | 20.6 |

Source: Industrial Disputes, Australia (Cat. no. 6321.0) (monthly).

7

AVERAGE WEEKLY EARNINGS OF EMPLOYEES

| | Males | | | Females | | | Persons | | |
|-------------|--|--------------------------------------|--------------------------------|--|--------------------------------------|----------------------------------|--|--------------------------------------|---------------------------------------|
| | Full-time adult ordinary time earnings | Full-time adult total earnings | All males total earnings | Full-time adult ordinary time earnings | Full-time adult total earnings | All females total earnings | Full-time adult ordinary time earnings | Full-time adult total earnings | All employees total earnings |
| | \$ | \$ | \$ | \$ | \$ | \$ | \$ | \$ | \$ |
| 1998 | | | | | | | | | |
| November | 781.80 | 842.10 | 716.80 | 657.40 | 673.30 | 473.90 | 736.30 | 780.30 | 602.40 |
| 1999 | | | | | | | | | |
| February | 769.20 | 823.70 | 710.90 | 658.10 | 673.20 | 474.40 | 729.00 | 769.20 | 600.30 |
| May | 783.00 | 835.00 | 717.60 | 666.20 | 679.80 | 486.50 | 740.60 | 778.60 | 608.00 |
| August | 772.30 | 821.00 | 705.70 | 685.20 | 700.80 | 488.40 | 740.80 | 777.60 | 601.60 |
| November | 780.80 | 838.80 | 726.90 | 695.40 | 712.40 | 488.80 | 750.10 | 793.40 | 610.80 |
| 2000 | | | | | | | | | |
| February | 797.80 | 843.70 | 732.30 | 696.70 | 710.00 | 492.60 | 761.30 | 795.40 | 616.20 |

Source: Average Weekly Earnings, States and Australia (Cat. no. 6302.0) (quarterly).

8

CONSUMER PRICE INDEX—MELBOURNE

| | Food | Clothing | Housing | Household equipment and operation | Transport- ation | Tobacco and alcohol | Health and personal care | Recreation and education | All groups | Weighted average of eight capital cities—All groups |
|----------------|-------|----------|---------|--|---------------------|---------------------------|-----------------------------------|--------------------------------|------------|--|
| 1996–97 | 118.6 | 108.4 | 95.0 | 114.7 | 124.0 | 158.5 | 157.1 | 123.3 | 119.9 | 120.3 |
| 1997–98 | 120.5 | 108.9 | 86.5 | 115.0 | 123.3 | 161.4 | 162.2 | 127.6 | 119.8 | 120.3 |
| 1998–99 | 125.1 | 108.1 | 86.7 | 115.1 | 120.8 | 166.9 | 161.1 | 129.6 | 120.9 | 121.8 |
| 1998 | | | | | | | | | | |
| March qtr | 120.7 | 109.0 | 84.1 | 115.1 | 122.1 | 162.0 | 163.6 | 129.4 | 119.6 | 120.3 |
| June qtr | 121.6 | 108.9 | 86.2 | 115.1 | 122.0 | 163.9 | 165.8 | 128.8 | 120.3 | 121.0 |
| September qtr | 123.6 | 108.9 | 85.3 | 115.3 | 121.0 | 165.0 | 166.7 | 128.4 | 120.4 | 121.3 |
| December qtr | 124.3 | 108.2 | 86.6 | 115.3 | 120.6 | 166.0 | 165.3 | 129.0 | 120.8 | 121.9 |
| 1999 | | | | | | | | | | |
| March qtr | 125.8 | 107.5 | 87.3 | 114.7 | 119.9 | 167.6 | 155.7 | 131.0 | 121.0 | 121.8 |
| June qtr | 126.7 | 107.8 | 87.5 | 115.1 | 121.6 | 169.1 | 156.6 | 129.8 | 121.5 | 122.3 |
| September qtr | 127.8 | 107.5 | 88.8 | 114.3 | 125.9 | 169.4 | 157.0 | 130.7 | 122.7 | 123.4 |
| December qtr | 128.6 | 107.1 | 90.4 | 114.4 | 125.2 | 173.7 | 157.0 | 131.0 | 123.5 | 124.1 |
| 2000 | | | | | | | | | | |
| March qtr | 128.3 | 106.9 | 91.7 | 114.3 | 129.2 | 176.5 | 160.5 | 132.2 | 124.7 | 125.2 |

Base of each group: year 1989–90=100.0.

Source: Consumer Price Index (Cat. no. 6401.0) (quarterly).

9

PRICE INDEX OF MATERIALS USED IN BUILDING—MELBOURNE

| Group | 1999–2000 | | | | | | Weighted average of six state capital cities—Mar qtr 2000 |
|--|-----------|---------|---------|---------|---------|---------|---|
| | 1996–97 | 1997–98 | 1998–99 | Sep qtr | Dec qtr | Mar qtr | |
| House building | | | | | | | |
| All groups | 115.3 | 117.1 | 118.0 | 119.2 | 120.5 | 122.9 | 123.8 |
| Other than house building | | | | | | | |
| Structural timber | 110.1 | 115.6 | 116.2 | 113.1 | 117.6 | 119.9 | 133.2 |
| Clay bricks | 113.1 | 117.9 | 119.6 | 119.3 | 119.3 | 126.3 | 125.7 |
| Ready mix concrete | 111.5 | 111.4 | 112.9 | 111.6 | 111.3 | 110.3 | 102.9 |
| Precast concrete products | 110.3 | 115.7 | 123.9 | 126.6 | 127.5 | 133.6 | 128.5 |
| Steel decking and cladding | 109.2 | 109.4 | 108.0 | 107.8 | 108.5 | 108.0 | 114.6 |
| Structural steel | 104.2 | 104.9 | 104.9 | 101.2 | 102.0 | 100.8 | 112.3 |
| Reinforcing steel bar, mesh, etc. | 100.7 | 100.8 | 99.5 | 93.7 | 92.6 | 94.7 | 105.2 |
| Aluminium windows | 100.6 | 100.0 | 100.4 | 102.0 | 103.6 | 104.9 | 114.6 |
| Fabricated steel products | 116.7 | 120.0 | 124.7 | 125.1 | 125.5 | 125.6 | 118.2 |
| Builders' hardware | 116.5 | 119.6 | 122.7 | 125.0 | 125.7 | 126.0 | 129.2 |
| Sand and aggregate | 115.9 | 116.3 | 120.5 | 121.3 | 120.2 | 120.2 | 123.8 |
| Carpet | 101.6 | 102.6 | 100.1 | 99.4 | 99.3 | 98.0 | 101.5 |
| Paint and other coatings | 145.8 | 144.7 | 153.8 | 158.0 | 163.0 | 164.3 | 150.7 |
| Non-ferrous pipes and fittings | 111.5 | 113.0 | 111.2 | 112.9 | 117.6 | 117.6 | 133.2 |
| All groups excluding electrical materials and mechanical services | 110.0 | 111.0 | 112.3 | 112.0 | 112.3 | 112.9 | 115.4 |
| All electrical materials | 112.0 | 109.8 | 112.4 | 115.8 | 116.6 | 117.2 | 122.5 |
| All mechanical services | 115.0 | 114.9 | 118.2 | 119.6 | 120.1 | 120.9 | 119.3 |
| All plumbing materials | 120.1 | 122.8 | 122.8 | 125.7 | 126.1 | 128.2 | 132.3 |
| All groups | 110.9 | 111.4 | 113.2 | 113.4 | 113.8 | 114.5 | 116.4 |

Base of each index: year 1989–90=100.0.

Source: Price Index of Materials Used in Building Other Than House Building, Six State Capital Cities (Cat. no. 6407.0) (quarterly); Price Index of Materials Used in House Building, Six State Capital Cities (Cat. no. 6408.0) (quarterly).

10

LIVESTOCK SLAUGHTERINGS

| | Cattle | Calves | Sheep | Lambs | Pigs |
|----------------|---------|--------|---------|---------|---------|
| | '000 | '000 | '000 | '000 | '000 |
| 1996-97 | 1 675.9 | 697.3 | 2 806.6 | 5 978.9 | 1 397.2 |
| 1997-98 | 1 798.0 | 767.2 | 3 285.6 | 6 385.7 | 1 567.7 |
| 1998-99 | 1 751.3 | 714.4 | 3 079.6 | 6 699.4 | 1 572.8 |
| 1999 | | | | | |
| January | 152.6 | 5.9 | 256.9 | 554.6 | 102.8 |
| February | 161.4 | 6.0 | 296.0 | 538.1 | 111.0 |
| March | 146.1 | 15.0 | 314.3 | 574.6 | 132.9 |
| April | 128.3 | 24.5 | 263.9 | 510.4 | 126.6 |
| May | 134.3 | 43.8 | 262.6 | 466.2 | 135.2 |
| June | 126.2 | 78.5 | 230.4 | 524.4 | 133.1 |
| July | 124.9 | 90.6 | 246.1 | 554.1 | 127.0 |
| August | 117.4 | 182.8 | 238.9 | 535.4 | 123.0 |
| September | 112.3 | 142.5 | 282.6 | 625.0 | 126.3 |
| October | 123.3 | 50.2 | 329.1 | 605.3 | 116.2 |
| November | 132.5 | 20.7 | 344.2 | 639.7 | 117.3 |
| December | 133.5 | 9.0 | 339.1 | 610.6 | 131.2 |
| 2000 | | | | | |
| January | 124.0 | 7.2 | 341.0 | 530.8 | 109.9 |
| February | 136.1 | 8.1 | 398.8 | 590.6 | 117.6 |
| March | 140.8 | 16.9 | 392.6 | 627.4 | 131.2 |
| April | 107.0 | 26.4 | 270.2 | 513.3 | 110.1 |

Source: Unpublished data, Monthly Livestock Collection.

11

MEAT PRODUCTION

| | Meat (carcass weight) | | | | |
|----------------|-----------------------|--------|--------|---------|---------|
| | Beef | Veal | Mutton | Lamb | Pigmeat |
| | tonnes | tonnes | tonnes | tonnes | tonnes |
| 1996-97 | 373 819 | 14 293 | 55 545 | 111 403 | 99 226 |
| 1997-98 | 389 087 | 15 578 | 63 470 | 119 972 | 112 504 |
| 1998-99 | 398 815 | 14 225 | 61 647 | 128 379 | 114 581 |
| 1999 | | | | | |
| January | 35 570 | 149 | 5 200 | 10 571 | 7 449 |
| February | 38 184 | 153 | 5 815 | 10 339 | 8 035 |
| March | 33 412 | 332 | 6 217 | 11 110 | 9 635 |
| April | 30 360 | 497 | 5 104 | 9 786 | 9 527 |
| May | 30 429 | 878 | 5 121 | 9 085 | 10 164 |
| June | 28 023 | 1 520 | 4 615 | 10 337 | 9 824 |
| July | 28 011 | 1 729 | 4 976 | 11 002 | 9 358 |
| August | 26 379 | 3 563 | 4 894 | 10 232 | 9 197 |
| September | 25 749 | 2 797 | 5 943 | 12 233 | 9 442 |
| October | 28 673 | 1 010 | 7 278 | 11 770 | 8 698 |
| November | 31 629 | 425 | 7 038 | 12 338 | 8 796 |
| December | 31 062 | 208 | 6 897 | 11 709 | 9 403 |
| 2000 | | | | | |
| January | 29 030 | 177 | 6 749 | 10 608 | 8 029 |
| February | 31 668 | 198 | 7 647 | 11 693 | 8 499 |
| March | 32 739 | 364 | 7 598 | 12 316 | 9 595 |
| April | 24 536 | 533 | 5 220 | 10 145 | 7 866 |

Source: Unpublished data, Monthly Livestock Collection.

| | New dwelling units(a) | | | | | | Conversions etc.(d) | Alterations and additions to residential buildings | Non-residential building(b) | | |
|--------------------------------|-----------------------|---------|---------------|------|----------|---------|------------------------|--|--------------------------------|---------|-----------|
| | Private sector | | Public sector | | Total(c) | | | | Private sector | Total | Total all |
| | no. | \$m | no. | \$m | no. | \$m | | | \$m | \$m | \$m |
| MELBOURNE STATISTICAL DIVISION | | | | | | | | | | | |
| 1996-97 | 19 670 | 2 185.2 | 447 | 35.7 | 20 117 | 2 221.0 | 1 189 | 592.3 | 1 527.1 | 2 303.0 | 5 116.2 |
| 1997-98 | 26 490 | 3 026.5 | 723 | 56.0 | 27 213 | 3 082.6 | 1 029 | 701.2 | 2 168.2 | 2 593.0 | 6 376.8 |
| 1998-99 | 28 616 | 3 550.4 | 661 | 49.6 | 29 277 | 3 600.0 | 1 555 | 800.3 | 1 918.6 | 2 642.3 | 7 042.6 |
| 1999 | | | | | | | | | | | |
| January | 1 708 | 210.4 | 125 | 8.8 | 1 833 | 219.1 | 22 | 41.6 | 87.9 | 153.8 | 414.5 |
| February | 2 785 | 353.4 | 51 | 3.1 | 2 826 | 356.5 | 229 | 73.7 | 109.3 | 206.7 | 636.9 |
| March | 2 554 | 326.1 | 37 | 4.0 | 2 591 | 330.1 | 103 | 75.3 | 159.7 | 226.8 | 632.3 |
| April | 2 447 | 281.9 | 52 | 3.4 | 2 499 | 285.3 | 160 | 72.3 | 126.8 | 157.4 | 515.0 |
| May | 2 642 | 337.1 | 37 | 2.4 | 2 679 | 339.5 | 48 | 63.0 | 174.4 | 202.0 | 604.5 |
| June | 2 450 | 320.9 | 45 | 4.0 | 2 495 | 324.9 | 43 | 69.2 | 108.4 | 125.1 | 519.2 |
| July | 2 746 | 351.9 | 88 | 6.3 | 2 834 | 358.2 | 194 | 92.2 | 183.6 | 208.6 | 659.1 |
| August | 3 768 | 494.0 | 39 | 4.3 | 3 807 | 498.3 | 78 | 86.1 | 159.2 | 226.2 | 810.7 |
| September | 3 038 | 405.7 | 72 | 5.9 | 3 110 | 411.6 | 33 | 76.9 | 198.4 | 214.0 | 702.5 |
| October | 2 685 | 357.5 | 93 | 8.0 | 2 778 | 365.5 | 86 | 82.8 | 154.4 | 197.9 | 646.2 |
| November | 3 105 | 403.5 | 59 | 4.6 | 3 164 | 408.1 | 96 | 77.2 | 154.2 | 181.1 | 666.3 |
| December | 2 930 | 408.9 | 62 | 6.0 | 2 992 | 414.9 | 95 | 69.8 | 146.7 | 209.3 | 694.0 |
| 2000 | | | | | | | | | | | |
| January | 2 867 | 407.4 | 19 | 1.6 | 2 886 | 409.0 | 144 | 66.1 | 165.2 | 181.5 | 656.7 |
| February | 3 327 | 436.9 | 54 | 4.1 | 3 381 | 440.9 | 91 | 86.1 | 176.6 | 214.7 | 741.7 |
| March | 3 668 | 511.8 | 9 | 0.8 | 3 677 | 512.6 | 60 | 81.3 | 134.6 | 152.7 | 746.5 |
| April | 2 334 | 310.1 | 30 | 2.3 | 2 364 | 312.4 | 87 | 64.3 | 152.7 | 197.7 | 574.4 |
| TOTAL VICTORIA | | | | | | | | | | | |
| 1996-97 | 26 014 | 2 793.3 | 596 | 46.7 | 26 610 | 2 839.9 | 1 240 | 728.5 | 1 879.7 | 2 839.8 | 6 408.2 |
| 1997-98 | 34 178 | 3 811.3 | 1 171 | 88.6 | 35 349 | 3 899.8 | 1 089 | 858.5 | 2 476.9 | 3 064.5 | 7 822.8 |
| 1998-99 | 37 194 | 4 482.6 | 894 | 67.2 | 38 088 | 4 549.9 | 1 616 | 951.2 | 2 262.5 | 3 125.7 | 8 626.8 |
| 1999 | | | | | | | | | | | |
| January | 2 297 | 274.0 | 155 | 10.9 | 2 452 | 284.9 | 23 | 52.4 | 111.6 | 184.6 | 521.8 |
| February | 3 469 | 431.8 | 83 | 5.5 | 3 552 | 437.4 | 232 | 86.9 | 129.8 | 255.7 | 780.0 |
| March | 3 467 | 425.2 | 61 | 5.5 | 3 528 | 430.7 | 109 | 90.5 | 188.4 | 275.0 | 796.3 |
| April | 3 196 | 365.7 | 57 | 3.8 | 3 253 | 369.5 | 163 | 85.7 | 146.3 | 183.9 | 639.0 |
| May | 3 516 | 436.2 | 42 | 3.1 | 3 558 | 439.3 | 52 | 74.4 | 202.3 | 241.6 | 755.4 |
| June | 3 214 | 408.5 | 51 | 4.6 | 3 265 | 413.2 | 47 | 83.4 | 156.3 | 183.2 | 679.8 |
| July | 3 565 | 444.8 | 134 | 9.2 | 3 699 | 454.0 | 194 | 105.2 | 211.9 | 248.2 | 807.4 |
| August | 4 619 | 587.3 | 66 | 6.5 | 4 685 | 593.8 | 85 | 101.9 | 204.5 | 282.8 | 978.5 |
| September | 3 964 | 513.6 | 105 | 8.7 | 4 069 | 522.1 | 36 | 95.7 | 217.2 | 240.6 | 858.5 |
| October | 3 653 | 473.3 | 98 | 8.4 | 3 751 | 481.8 | 88 | 97.7 | 182.0 | 236.8 | 816.2 |
| November | 4 048 | 515.0 | 68 | 5.4 | 4 116 | 520.5 | 107 | 91.4 | 184.8 | 222.3 | 834.2 |
| December | 3 854 | 520.0 | 64 | 6.3 | 3 918 | 526.2 | 101 | 85.5 | 184.7 | 261.9 | 873.7 |
| 2000 | | | | | | | | | | | |
| January | 3 662 | 502.3 | 27 | 2.3 | 3 689 | 504.6 | 152 | 79.5 | 189.6 | 227.6 | 811.6 |
| February | 4 438 | 570.8 | 73 | 5.9 | 4 511 | 576.7 | 101 | 99.6 | 202.3 | 271.6 | 947.9 |
| March | 4 640 | 630.7 | 12 | 1.1 | 4 652 | 631.8 | 66 | 99.4 | 162.3 | 192.2 | 923.3 |
| April | 3 109 | 404.9 | 39 | 3.0 | 3 148 | 407.9 | 103 | 79.2 | 176.2 | 229.2 | 716.4 |

(a) Valued at \$10,000 and over.

(b) Valued at \$50,000 and over.

(c) Excludes dwelling units created as a result of conversions or construction of non-residential buildings.

(d) Dwelling units created as a result of conversions or construction of non-residential buildings.

Source: Building Approvals, Victoria (Cat. no. 8731.2) (quarterly).

NEW HOUSES AND OTHER RESIDENTIAL BUILDINGS, NUMBER OF DWELLING UNITS

| | <i>New houses</i> | | | | <i>New other residential buildings</i> | | | |
|----------------|-------------------|------------------|------------------------------|------------------|--|------------------|------------------------------|------------------|
| | <i>Approved</i> | <i>Commenced</i> | <i>Under construction(a)</i> | <i>Completed</i> | <i>Approved</i> | <i>Commenced</i> | <i>Under construction(a)</i> | <i>Completed</i> |
| | <i>no.</i> | <i>no.</i> | <i>no.</i> | <i>no.</i> | <i>no.</i> | <i>no.</i> | <i>no.</i> | <i>no.</i> |
| 1996-97 | 19 805 | 18 652 | 8 937 | 17 613 | 6 805 | 6 047 | 4 151 | 5 727 |
| 1997-98 | 27 937 | 26 004 | 12 368 | 22 425 | 7 412 | 7 598 | 5 148 | 6 542 |
| 1998-99 | 29 227 | 29 165 | 14 455 | 26 926 | 8 861 | 8 307 | 6 198 | 7 029 |
| 1998 | | | | | | | | |
| September qtr | 7 526 | 7 362 | 12 740 | 6 951 | 1 706 | 2 000 | 5 404 | 1 700 |
| December qtr | 6 873 | 7 399 | 13 127 | 6 995 | 2 375 | 1 682 | 5 175 | 1 906 |
| 1999 | | | | | | | | |
| March qtr | 7 071 | 6 494 | 13 846 | 5 699 | 2 461 | 2 159 | 5 752 | 1 559 |
| June qtr | 7 757 | 7 910 | 14 455 | 7 281 | 2 319 | 2 466 | 6 198 | 1 864 |
| September qtr | 9 280 | 8 155 | 15 667 | 6 939 | 3 173 | 3 354 | 7 844 | 1 702 |
| December qtr | 9 412 | 8 699 | 15 669 | 8 667 | 2 373 | 2 554 | 8 851 | 1 537 |

(a) Under construction at the end of the period.

Source: *Building Activity, Victoria* (Cat. no. 8752.2) (quarterly); *Building Approvals, Victoria* (Cat. no. 8731.2) (quarterly).

| | Residential buildings | | | Non-residential buildings | | | | | Total |
|-------------------------------------|-----------------------|---------------------------|-------|---------------------------|---------|-----------|--------|---------|---------|
| | New | Alterations and additions | Shops | Factories | Offices | Education | Health | Other | |
| | \$m | \$m | \$m | \$m | \$m | \$m | \$m | \$m | |
| COMMENCED | | | | | | | | | |
| 1996-97 | 2 692.2 | 761.0 | 348.2 | 343.8 | 508.5 | 410.3 | 303.6 | 1 003.3 | 6 371.1 |
| 1997-98 | 3 850.5 | 891.1 | 598.5 | 241.8 | 428.6 | 270.9 | 250.2 | 1 399.8 | 7 931.4 |
| 1998-99 | 4 496.3 | 987.2 | 444.1 | 263.6 | 428.1 | 485.0 | 239.9 | 1 186.0 | 8 530.2 |
| 1998 | | | | | | | | | |
| September qtr | 1 126.0 | 221.9 | 111.3 | 54.9 | 102.5 | 132.6 | 26.7 | 225.3 | 2 001.2 |
| December qtr | 1 066.4 | 291.0 | 137.8 | 79.9 | 136.2 | 175.6 | 95.1 | 429.7 | 2 411.7 |
| 1999 | | | | | | | | | |
| March qtr | 1 046.8 | 223.8 | 75.3 | 64.4 | 98.3 | 98.2 | 41.1 | 190.0 | 1 837.9 |
| June qtr | 1 257.1 | 250.4 | 119.8 | 64.3 | 91.1 | 78.7 | 76.9 | 341.1 | 2 279.4 |
| September qtr | 1 540.9 | 305.2 | 119.0 | 69.5 | 83.6 | 86.0 | 71.7 | 242.1 | 2 518.0 |
| December qtr | 1 521.6 | 276.1 | 108.3 | 64.4 | 164.9 | 76.3 | 73.5 | 172.4 | 2 457.5 |
| UNDER CONSTRUCTION AT END OF PERIOD | | | | | | | | | |
| 1996-97 | 1 582.3 | 358.5 | 284.6 | 214.9 | 233.4 | 310.0 | 236.2 | 1 741.7 | 4 961.6 |
| 1997-98 | 2 274.1 | 412.4 | 406.6 | 141.9 | 241.6 | 320.2 | 279.8 | 1 466.0 | 5 542.6 |
| 1998-99 | 2 745.1 | 451.3 | 420.8 | 120.9 | 190.2 | 485.8 | 243.5 | 1 611.2 | 6 268.8 |
| 1998 | | | | | | | | | |
| September qtr | 2 426.8 | 412.1 | 461.0 | 124.2 | 237.1 | 420.3 | 210.4 | 1 464.6 | 5 756.6 |
| December qtr | 2 430.6 | 450.5 | 427.2 | 134.7 | 253.1 | 489.2 | 257.4 | 1 566.8 | 6 009.6 |
| 1999 | | | | | | | | | |
| March qtr | 2 644.3 | 471.4 | 402.8 | 138.2 | 203.8 | 522.4 | 243.7 | 1 461.3 | 6 087.9 |
| June qtr | 2 745.1 | 451.3 | 420.8 | 120.9 | 190.2 | 485.8 | 243.5 | 1 611.2 | 6 268.8 |
| September qtr | 3 229.8 | 531.2 | 440.2 | 117.8 | 129.6 | 527.3 | 237.1 | 1 503.3 | 6 716.2 |
| December qtr | 3 481.0 | 563.5 | 313.8 | 109.6 | 203.2 | 485.0 | 217.0 | 1 434.5 | 6 807.8 |
| COMPLETED | | | | | | | | | |
| 1996-97 | 2 617.6 | 768.5 | 364.8 | 295.6 | 404.0 | 342.0 | 194.6 | 1 106.7 | 6 093.8 |
| 1997-98 | 3 213.6 | 866.6 | 474.7 | 338.4 | 449.4 | 283.2 | 208.2 | 1 738.4 | 7 572.4 |
| 1998-99 | 4 068.1 | 992.4 | 487.3 | 294.3 | 524.9 | 328.5 | 305.1 | 1 110.3 | 8 811.1 |
| 1998 | | | | | | | | | |
| September qtr | 997.9 | 236.8 | 88.8 | 77.0 | 108.3 | 33.2 | 103.7 | 247.0 | 1 892.7 |
| December qtr | 1 080.2 | 259.6 | 179.9 | 70.0 | 139.6 | 107.3 | 51.6 | 340.7 | 2 229.1 |
| 1999 | | | | | | | | | |
| March qtr | 855.2 | 215.9 | 100.6 | 64.1 | 155.6 | 69.2 | 56.6 | 312.4 | 1 829.5 |
| June qtr | 1 134.9 | 280.2 | 118.0 | 83.1 | 121.3 | 118.8 | 93.2 | 210.2 | 2 159.7 |
| September qtr | 1 075.3 | 235.3 | 116.3 | 76.1 | 147.0 | 50.2 | 81.2 | 375.3 | 2 156.7 |
| December qtr | 1 312.9 | 255.7 | 267.8 | 74.0 | 92.8 | 123.9 | 93.5 | 251.9 | 2 472.5 |

Source: Building Activity, Victoria (Cat. no. 8752.2) (quarterly).

15

PRIVATE NEW CAPITAL EXPENDITURE, BY SELECTED INDUSTRIES AND TYPE OF ASSET

| | Selected industries | | | | Type of asset | |
|------------------|---------------------|---------------|---------------------------|--------|------------------------------|--------------------------------|
| | Mining | Manufacturing | Other selected industries | Total | New buildings and structures | Equipment, plant and machinery |
| | \$m | \$m | \$m | \$m | \$m | \$m |
| ACTUAL | | | | | | |
| 1997-98 | 833 | 3 401 | 6 809 | 11 044 | 2 858 | 8 185 |
| 1998-99 | 1 234 | 2 951 | 7 166 | 11 352 | 3 210 | 8 141 |
| 1998 | | | | | | |
| September qtr | 318 | 715 | 1 843 | 2 876 | 861 | 2 015 |
| December qtr | 288 | 780 | 1 900 | 2 968 | 819 | 2 149 |
| 1999 | | | | | | |
| March qtr | 321 | 652 | 1 665 | 2 639 | 862 | 1 776 |
| June qtr | 306 | 803 | 1 758 | 2 868 | 668 | 2 200 |
| September qtr | 205 | 918 | 1 709 | 2 832 | 799 | 2 034 |
| December qtr | 194 | 925 | 1 855 | 2 973 | 711 | 2 262 |
| EXPECTED | | | | | | |
| 1999-2000 | 813 | 3 513 | 6 547 | 10 872 | 2 664 | 8 208 |
| 2000-2001 | 704 | 3 824 | 5 501 | 10 029 | 2 086 | 7 943 |

Source: State Estimates of Private New Capital Expenditure (Cat. no. 5646.0) (quarterly).

16

COMMERCIAL FINANCE COMMITMENTS

| | Fixed loan facilities | | | | | | Type of lender | | | |
|-------------|-----------------------|---------------------------|---------------------------------|-----------|---------|---------|-----------------------------|-------------------|-----------|-------------------|
| | Construction | Purchase of real property | Purchase of plant and equipment | Wholesale | Other | Total | Revolving credit facilities | Total commitments | Banks | All other lenders |
| | \$m | \$m | \$m | \$m | \$m | \$m | \$m | \$m | \$m | \$m |
| 1999 | | | | | | | | | | |
| January | 38.8 | 358.9 | 138.8 | 51.2 | 461.8 | 1 049.5 | 1 220.7 | 2 270.3 | 2 102.2 | 168.0 |
| February | 90.4 | 384.5 | 176.4 | 74.5 | 852.9 | 1 578.6 | 2 593.6 | 4 172.2 | 3 081.1 | 1 091.2 |
| March | 110.5 | 477.6 | 190.6 | 329.7 | 1 220.7 | 2 329.2 | 2 467.0 | 4 796.2 | 3 984.1 | 812.2 |
| April | 82.5 | 469.2 | 170.8 | 79.0 | 501.9 | 1 303.4 | 1 361.5 | 2 664.9 | 2 104.1 | 560.8 |
| May | 183.6 | 508.8 | 157.4 | 39.4 | 771.1 | 1 660.2 | 1 569.8 | 3 230.1 | 2 837.0 | 393.1 |
| June | 171.3 | 623.3 | 211.8 | 88.4 | 2 189.9 | 3 284.7 | 1 748.3 | 5 033.0 | 4 695.6 | 337.4 |
| July | 137.8 | 521.0 | 159.0 | 14.9 | 684.6 | 1 517.2 | 1 977.9 | 3 495.1 | 3 074.9 | 420.2 |
| August | 234.0 | 555.5 | 169.2 | 25.2 | 755.8 | 1 739.7 | 1 214.0 | 2 953.7 | 2 759.9 | 193.8 |
| September | 147.8 | 546.9 | 205.8 | 33.8 | 719.7 | 1 654.1 | 1 372.4 | 3 026.5 | 2 632.9 | 393.6 |
| October | 266.0 | 610.1 | 195.8 | 25.0 | 1 128.8 | 2 225.7 | 1 544.8 | 3 770.5 | 3 329.0 | 441.5 |
| November | 235.6 | 633.8 | 214.3 | 65.0 | 502.9 | 1 651.7 | 1 288.5 | 2 940.2 | 2 572.5 | 367.7 |
| December | 155.9 | 689.3 | 250.1 | 77.7 | 571.2 | 1 744.2 | 1 853.3 | 3 597.5 | 3 231.8 | 365.6 |
| 2000 | | | | | | | | | | |
| January | 194.3 | 527.0 | 151.5 | 60.5 | 406.1 | 1 339.4 | r 1 145.5 | r 2 484.9 | r 2 195.8 | 289.1 |
| February r | 118.6 | 657.7 | 194.6 | 57.5 | 525.7 | 1 554.1 | 1 515.9 | 3 070.0 | 2 805.0 | 265.0 |
| March | 123.4 | 671.5 | 204.7 | 91.9 | 683.9 | 1 775.6 | 2 010.7 | 3 786.3 | 3 202.3 | 583.9 |

Source: ABS Time Series Service (PC Ausstats).

17

SECURED HOUSING FINANCE COMMITMENTS, DWELLING UNITS

| | Original series | | Seasonally adjusted | | Trend estimates | |
|-------------|-----------------|-------|---------------------|-------|-----------------|---------|
| | no. | \$m | no. | \$m | no. | \$m |
| 1999 | | | | | | |
| January | 8 095 | 983 | 10 269 | 1 236 | 10 238 | 1 220 |
| February | 9 727 | 1 154 | 10 023 | 1 220 | 10 516 | 1 274 |
| March | 12 455 | 1 520 | 11 394 | 1 362 | 10 693 | 1 313 |
| April | 11 014 | 1 348 | 10 942 | 1 374 | 10 743 | 1 334 |
| May | 10 896 | 1 389 | 10 752 | 1 344 | 10 694 | 1 341 |
| June | 11 305 | 1 445 | 10 420 | 1 346 | 10 642 | 1 348 |
| July | 10 518 | 1 334 | 10 355 | 1 323 | 10 686 | 1 369 |
| August | 10 855 | 1 397 | 10 668 | 1 370 | 10 875 | 1 409 |
| September | 11 377 | 1 475 | 11 069 | 1 408 | r 11 179 | r 1 466 |
| October | 11 386 | 1 534 | 11 740 | 1 600 | r 11 470 | r 1 521 |
| November | 12 231 | 1 639 | 12 127 | 1 628 | r 11 603 | r 1 555 |
| December | 11 652 | 1 592 | 11 617 | 1 568 | r 11 558 | r 1 561 |
| 2000 | | | | | | |
| January | 8 962 | 1 242 | 11 342 | 1 521 | r 11 394 | r 1 547 |
| February | 11 184 | 1 498 | 11 051 | 1 554 | r 11 180 | r 1 522 |
| March | 11 558 | 1 554 | 10 526 | 1 389 | 10 940 | 1 490 |

Source: Housing Finance for Owner Occupation, Australia (Cat. no. 5609.0) (monthly).

18

RETAIL TURNOVER, BY INDUSTRY (EXCLUDING MOTOR VEHICLES, PARTS, PETROL, ETC.)

| | Food | Department | Clothing | Household | Recreational | Other | Hospitality | Total r |
|-------------|-------------|------------|---------------------------------|---------------------|---------------------|-------------|----------------|---------|
| | retailing r | stores | and soft good retailing r | good retailing r | good retailing r | retailing r | and services r | |
| | \$m | \$m | \$m | \$m | \$m | \$m | \$m | \$m |
| 1999 | | | | | | | | |
| February | 1 089.2 | 185.9 | 157.5 | 303.9 | 132.7 | 259.3 | 343.7 | 2 472.3 |
| March | 1 202.9 | 233.5 | 202.7 | 322.0 | 147.1 | 316.8 | 383.6 | 2 808.7 |
| April | 1 159.1 | 236.6 | 213.5 | 324.7 | 141.1 | 300.0 | 398.2 | 2 773.1 |
| May | 1 167.0 | 253.5 | 215.8 | 338.6 | 140.1 | 291.6 | 398.7 | 2 805.4 |
| June | 1 126.2 | 220.4 | 217.2 | 333.9 | 143.7 | 303.8 | 392.7 | 2 737.7 |
| July | 1 210.5 | 263.2 | 219.0 | 336.4 | 136.5 | 322.8 | 438.8 | 2 927.2 |
| August | 1 177.9 | 221.3 | 209.5 | 337.6 | 139.8 | 315.1 | 422.3 | 2 823.5 |
| September | 1 186.2 | 248.5 | 222.6 | 347.8 | 149.5 | 324.5 | 438.8 | 2 917.9 |
| October | 1 242.0 | 259.3 | 234.5 | 379.3 | 148.5 | 324.2 | 448.9 | 3 036.6 |
| November | 1 231.9 | 304.1 | 243.3 | 392.3 | 157.8 | 338.4 | 441.7 | 3 109.6 |
| December | 1 463.8 | 528.1 | 339.8 | 498.2 | 233.8 | 439.8 | 526.4 | 4 030.0 |
| 2000 | | | | | | | | |
| January | 1 219.9 | 228.0 | 221.5 | 358.1 | 138.2 | 267.6 | 412.3 | 2 845.5 |
| February | 1 155.2 | 195.9 | 181.7 | 326.1 | 120.7 | 268.1 | 406.6 | 2 654.2 |
| March | 1 244.7 | 224.2 | 217.4 | 342.8 | 132.1 | 292.6 | 451.7 | 2 905.5 |
| April | 1 163.1 | 260.6 | 224.2 | 309.6 | 117.4 | 291.9 | 388.4 | 2 755.3 |

Source: Retail Trade, Australia (Cat. no. 8501.0) (monthly).

19

EXPORTS AND IMPORTS, BY SECTIONS OF THE AUSTRALIAN EXPORT AND IMPORT CLASSIFICATIONS(a)

| | 1998-99 | | Ten months ending April 2000 | |
|---|---------------|---------------|------------------------------|---------------|
| | Imports | Exports | Imports | Exports |
| | \$m | \$m | \$m | \$m |
| 0 Food and live animals chiefly for food | 1 313 | r 3 958 | 1 138 | 3 661 |
| 1 Beverages and tobacco | 134 | 166 | 118 | 157 |
| 2 Crude materials, inedible (except fuels) | 585 | 1 405 | 506 | 1 293 |
| 3 Mineral fuels, lubricants, and related materials | 1 150 | 798 | 1 331 | 982 |
| 4 Animal and vegetable oils, fats and waxes | 108 | 108 | 76 | 91 |
| 5 Chemicals and related products, n.e.c. | 3 247 | 977 | 2 730 | 843 |
| 6 Manufacturing goods classified chiefly by material | 4 470 | 2 422 | 3 854 | 2 200 |
| 7 Machinery and transport equipment | 13 489 | 2 897 | 12 130 | 3 373 |
| 8 Miscellaneous manufactured articles | 5 343 | 1 039 | 4 898 | 967 |
| 9 Commodities and transactions of merchandise trade, n.e.c. | 1 175 | r 2 721 | 928 | 2 176 |
| Total | 31 014 | 16 489 | 27 709 | 15 743 |

(a) Any discrepancies between sums of the component items and totals are due to rounding.

Source: Foreign Trade Australia: Fasttracs Database.

20

OVERSEAS TRADE, MAJOR TRADING PARTNERS(a)

| Country | 1997-98 | | 1998-99 | | Ten months ending April 2000 | |
|--------------------------|---------------|---------------|---------------|---------------|------------------------------|---------------|
| | Imports | Exports | Imports | Exports | Imports | Exports |
| | \$m | \$m | \$m | \$m | \$m | \$m |
| Belgium-Luxembourg | 243 | 91 | 239 | 102 | 215 | 97 |
| Brazil | 134 | 76 | 118 | 48 | 85 | 38 |
| Canada | 390 | 122 | 392 | 125 | 380 | 111 |
| China | 2 154 | 624 | 2 537 | 669 | 2 495 | 861 |
| Fiji | 133 | 245 | 180 | 242 | 169 | 246 |
| Finland | 193 | 12 | 188 | 9 | 161 | 8 |
| France | 631 | 168 | 619 | 131 | 521 | 117 |
| Germany | 2 116 | 268 | 2 341 | 407 | 1 977 | 324 |
| Hong Kong (SAR of China) | 338 | 1 073 | 431 | 900 | 328 | 776 |
| India | 256 | 188 | 261 | 192 | 221 | 154 |
| Indonesia | 637 | 325 | 1 078 | 226 | 742 | 238 |
| Italy | 963 | 396 | 1 038 | 288 | 854 | 271 |
| Japan | 3 847 | 1 686 | 4 133 | 1 676 | 3 596 | 1 551 |
| Korea, Republic of | 882 | 1 039 | 847 | 862 | 699 | 935 |
| Malaysia | 668 | 517 | 873 | 431 | 935 | 413 |
| Mexico | 80 | 77 | 103 | 90 | 93 | 59 |
| Netherlands | 254 | 81 | 292 | 109 | 256 | 88 |
| New Zealand | 1 311 | 1 552 | 1 333 | 1 640 | 1 217 | 2 016 |
| Pakistan | 97 | 87 | 87 | r 43 | 73 | 49 |
| Papua New Guinea | 163 | 235 | 64 | 188 | 60 | 117 |
| Philippines | 135 | 388 | 157 | 387 | 129 | 324 |
| Saudi Arabia | 107 | 268 | 107 | 511 | 144 | 590 |
| Singapore | 492 | 989 | 510 | 1 080 | 521 | 1 232 |
| South Africa | 147 | 272 | 125 | 217 | 138 | 193 |
| Sweden | 585 | 41 | 598 | 25 | 510 | 24 |
| Switzerland | 277 | 24 | 335 | 34 | 263 | 29 |
| Taiwan | 852 | 657 | 905 | 920 | 757 | 678 |
| Thailand | 400 | 341 | 523 | 343 | 533 | 368 |
| United Kingdom | 1 694 | 453 | 1 839 | 1 169 | 1 482 | 606 |
| United States of America | 7 027 | 1 603 | 6 891 | 1 469 | 6 401 | 1 357 |
| Other and unknown | 1 645 | 2 033 | 1 870 | r 1 956 | 1 754 | 1 873 |
| Total | 28 851 | 15 931 | 31 014 | 16 489 | 27 709 | 15 743 |

(a) The list of countries in this table reflects the volume of trade with Victoria. Information about Victoria's trade with other countries is available on request.

Source: Overseas Trade: Fasttracs Database.

21

VALUE OF OVERSEAS TRADE—VICTORIA AND AUSTRALIA

| | Victoria | | | | Australia |
|----------------|----------|---------|---------|---------------------------------|---------------------|
| | Imports | Exports | Imports | Exports | Excess of exports r |
| | \$m | \$m | \$m | (including re-exports) r \$m | \$m |
| 1997-98 | 28 851 | 15 931 | 90 684 | 87 768 | -2 916 |
| 1998-99 | 31 014 | 16 489 | 97 611 | 85 991 | -11 620 |
| 1999 | | | | | |
| February | 2 274 | 1 218 | 7 112 | 6 243 | -869 |
| March | 2 855 | 1 504 | 8 699 | 7 330 | -1 369 |
| April | 2 393 | 1 341 | 7 731 | 6 433 | -1 298 |
| May | 2 331 | 1 381 | 7 746 | 6 967 | -779 |
| June | 2 652 | 1 332 | 8 142 | 6 892 | -1 250 |
| July | 2 663 | 1 256 | 8 181 | 7 158 | -1 023 |
| August | 2 748 | 1 352 | 8 871 | 7 349 | -1 522 |
| September | 2 777 | 1 460 | 8 965 | 7 392 | -1 573 |
| October r | 3 282 | 1 536 | 10 216 | 7 986 | -2 230 |
| November r | 2 869 | 2 105 | 9 678 | 8 471 | -1 207 |
| December r | 2 644 | 1 716 | 8 916 | 8 375 | -541 |
| 2000 | | | | | |
| January r | 2 558 | 1 217 | 8 112 | 6 813 | -1 299 |
| February r | 2 693 | 1 673 | 8 651 | 8 208 | -443 |
| March r | 2 982 | 1 844 | 9 659 | 8 806 | -853 |
| April | 2 493 | 1 584 | 7 971 | 8 257 | 286 |

Source: Overseas Trade: Fasttraccs Database.

22

TOURIST ACCOMMODATION

| Quarter ended | Hotels, motels, guest houses and serviced apartments(a) | | | | | | |
|---------------|---|-------------|------------|----------------------|---------------------|------------------|----------------------------|
| | Establishments | Guest rooms | Bed spaces | Room nights occupied | Room occupancy rate | Persons employed | Takings from accommodation |
| | no. | no. | no. | '000 | % | no. | \$'000 |
| 1998 | | | | | | | |
| June | 669 | 28 850 | 78 637 | 1 415.7 | 53.9 | 20 754 | 153 243 |
| September | 676 | 29 404 | 80 902 | 1 464.3 | 54.4 | 20 776 | 169 966 |
| December | 682 | 29 717 | 81 976 | 1 602.6 | 58.7 | 20 813 | 182 207 |
| 1999 | | | | | | | |
| March | 686 | 30 160 | 83 420 | 1 680.8 | 62.0 | 21 129 | 195 573 |
| June | 698 | 30 766 | 85 247 | 1 545.6 | 55.4 | 21 725 | 170 130 |
| September | 698 | 30 934 | 85 483 | 1 589.5 | 56.0 | 21 780 | 184 105 |
| December | 705 | 31 317 | 86 058 | 1 672.7 | 58.1 | 21 633 | 191 644 |

(a) Comprising establishments with 15 or more rooms or units.

Source: Tourist Accommodation, Australia (Cat. no. 8635.0) (quarterly).

FOR MORE INFORMATION...

- INTERNET* **www.abs.gov.au** the ABS web site is the best place to start for access to summary data from our latest publications, information about the ABS, advice about upcoming releases, our catalogue, and Australia Now—a statistical profile.
- LIBRARY* A range of ABS publications is available from public and tertiary libraries Australia-wide. Contact your nearest library to determine whether it has the ABS statistics you require, or visit our web site for a list of libraries.
- CPI INFOLINE* For current and historical Consumer Price Index data, call 1902 981 074 (call cost 75c per minute).
- DIAL-A-STATISTIC* For the latest figures for National Accounts, Balance of Payments, Labour Force, Average Weekly Earnings, Estimated Resident Population and the Consumer Price Index call 1900 986 400 (call cost 75c per minute).

INFORMATION SERVICE

Data which have been published and can be provided within five minutes are free of charge. Our information consultants can also help you to access the full range of ABS information—ABS user pays services can be tailored to your needs, time frame and budget. Publications may be purchased. Specialists are on hand to help you with analytical or methodological advice.

- PHONE* **1300 135 070**
- EMAIL* **client.services@abs.gov.au**
- FAX* 1300 135 211
- POST* Client Services, ABS, GPO Box 796, Sydney 1041

WHY NOT SUBSCRIBE?

ABS subscription services provide regular, convenient and prompt deliveries of ABS publications and products as they are released. Email delivery of monthly and quarterly publications is available.

- PHONE* 1300 366 323
- EMAIL* subscriptions@abs.gov.au
- FAX* 03 9615 7848
- POST* Subscription Services, ABS, GPO Box 2796Y, Melbourne 3001



2130320005008
ISSN 0158-202X

RRP \$16.00

© Commonwealth of Australia 2000

Produced by the Australian Bureau of Statistics